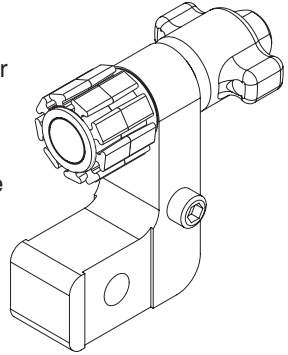
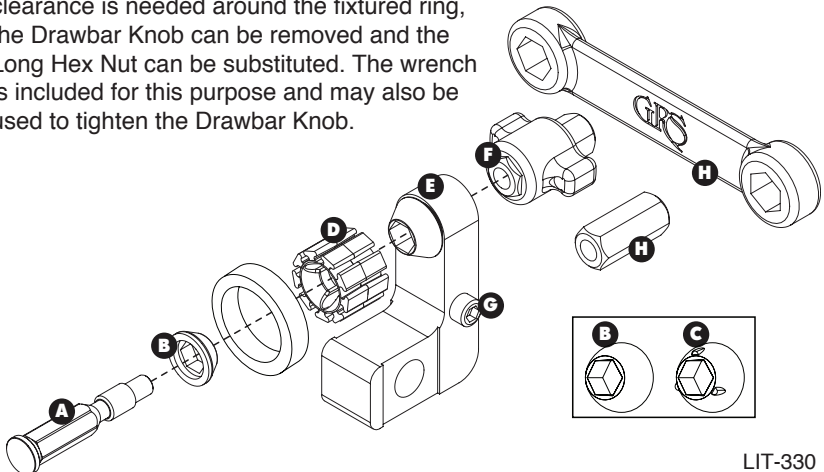


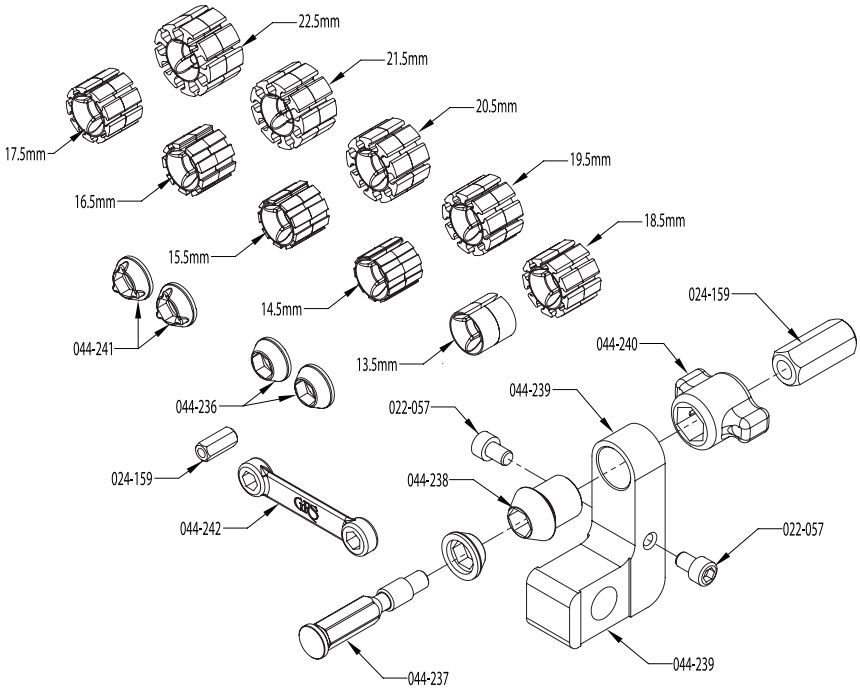
# ID Ring Holder

The new GRS Ring Holder takes ring fixtures to a new level. The expansion cones assure equal pressure on both sides of the mandrel as it grips the inside diameter of the ring. When using the Standard Cone (B) the ring drag can be set to allow smooth rotation of the workpiece while setting stones or engraving the ring surface. The unique locking action of the Locking Cone (C) allows the user to hold the ring in position without rotation and provides a steady platform on which to raise beads or pavé set.



- A. DRAWBAR: The mandrel and cone support bar that passes through the frame.
- B. STANDARD CONE: Allows the user to set rotational mandrel drag.
- C. LOCKING CONE: Does not allow for ring rotation.
- D. EXPANDING MANDREL SET: Two sets of 10 different sizes are available from 13.5mm to 22.5mm.
- E. ID RING HOLDER BODY: Rugged all steel design dampens vibration.
- F. DRAWBAR KNOB: Pulls the Drawbar into the cones, expanding the mandrel into the inner diameter of the ring. Hint: To avoid possible damage to the ring, do not overtighten the drawbar knob.
- G. SOCKET HEAD CAP SCREWS: These act as a stop to allow the fixture to mount in a vise. Also valuable for tilting the fixture up and down as needed. Screws can be removed if additional vise depth is desired.
- H. LONG HEX NUT AND WRENCH: If additional clearance is needed around the fixtured ring, the Drawbar Knob can be removed and the Long Hex Nut can be substituted. The wrench is included for this purpose and may also be used to tighten the Drawbar Knob.





**PARTS FOR ID RING HOLDER • #004-735**

<b>PART NO.</b>	<b>QTY.</b>	<b>DESCRIPTION</b>
004-705	2	SET OF 10 MOLDED ID MANDRELS
022-057	2	SHCS, #8-32 x 0.25" BLK
024-159	2	1/4-28 x 7/8" LG Z/P COUPLER NUT 3/8" HEX
044-236	2	STANDARD CONES
044-237	1	DRAWBAR
044-238	1	FRAME MOUNTED MANDREL EXPANSION CONE
044-239	1	ID RING HOLDER FRAME
044-240	1	DRAWBAR KNOB
044-241	2	LOCKING CONES
044-242	1	3/8" HEX WRENCH FOR ID RING HOLDER

**GLENDO CORPORATION**

900 Overlander Road  
P.O. Box 1153  
Emporia, KS 66801 USA  
800-835-3519 • 620-343-1084  
Fax: 620-343-9640  
E-mail: glendo@glendo.com  
www.grstools.com