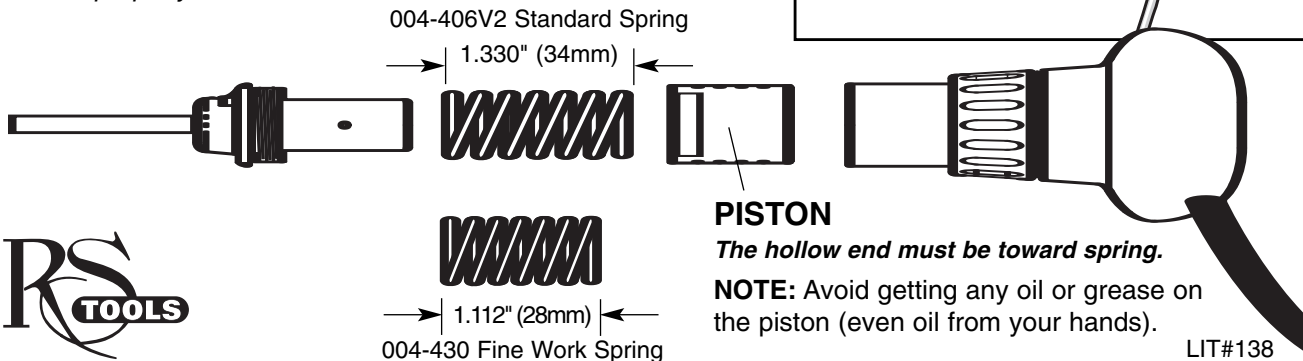
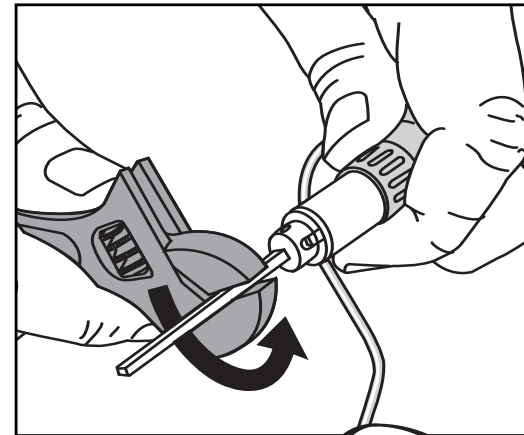


# FINE Engraving Spring OPTION for the... 901 Handpiece

The spring in this bag offers you the option to tune the 901's power for finer engraving work. With this spring in the handpiece, the air pressure will need to be approximately 14 psi.

## To Change Springs

Place a Quick Change Holder with a graver in the chuck. Using a wrench or pliers grip the graver (see illustration at right) and turn it counterclockwise to loosen the chuck retainer. After loosening you can turn the chuck retainer out with your finger tips. As you pull out the chuck there will be a spring and piston that follows. Replace the spring with the shorter "FINE WORK" spring and reassemble. **NOTE:** *The piston has a hollow end. The hollow end MUST be next to the spring or it will NOT work properly.*



LIT#138