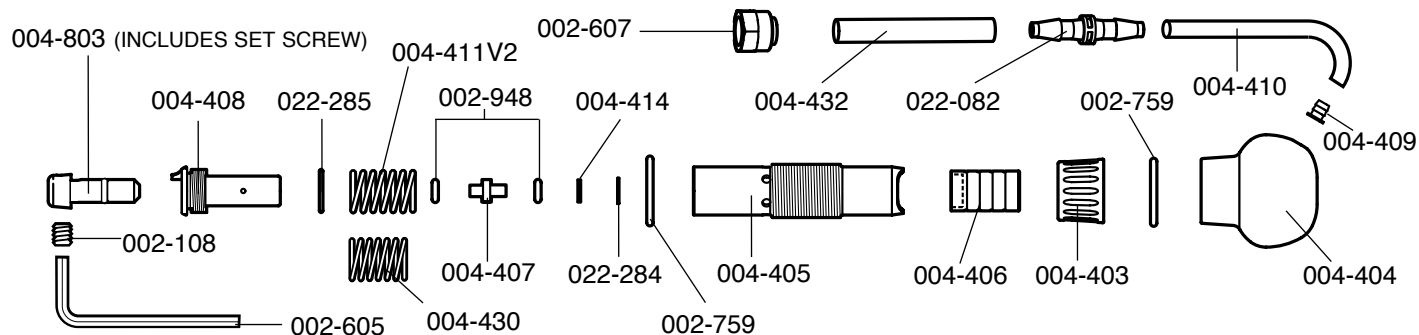


# GRS 901 QC Handpiece PARTS LIST

For GraverMach / GraverMax SC • PART #004-901



| Part No.   | Description                                     |
|------------|---|
| 002-108    | Set Screw                                       |
| 002-607    | Nut with Sleeve                                 |
| 002-605    | Allen Wrench                                    |
| 002-759    | O-Ring 1/2" ID X 1/16" Wide                     |
| 002-948    | O-Ring 1/8" ID X 1/16" Wide                     |
| 004-403    | Locking Nut                                     |
| 004-404    | Handle Knob                                     |
| 004-405    | Handpiece Body                                  |
| 004-406-V2 | Piston / Hammer                                 |
| 004-407    | Anvil   |
| 004-408    | Chuck Receiver                                  |
| 004-409    | Air Hose Retainer                               |
| 004-410    | Air Hose - 1/8" ID X 40"                        |
| 004-411-V2 | Spring  |
| 004-430    | Fine Work Spring                                |
| 004-432    | Air Hose - 1/4" OD X .16 ID X 4"                |
| 004-803    | Quick Change Chuck<br>(complete with set screw) |
| 022-082    | Tube Coupling                                   |
| 004-414    | Washer  |
| 022-284    | Internal Retaining Ring                         |
| 022-285    | O-Ring 10mm ID X 1mm Wide                       |

## GLENDO

CORPORATION

900 Overlander Road  
P.O. Box 1153  
Emporia, KS 66801 USA  
800-835-3519 • 620-343-1084  
Fax: 620-343-9640  
grstools@grstools.com  
[www.grstools.com](http://www.grstools.com)